

2016 Lake Ontario

Salmon Symposium

Randy Scott's Angler Record
1986-2015 - 30 Years



Gold Sponsors



Silver Sponsors



Bronze Sponsors



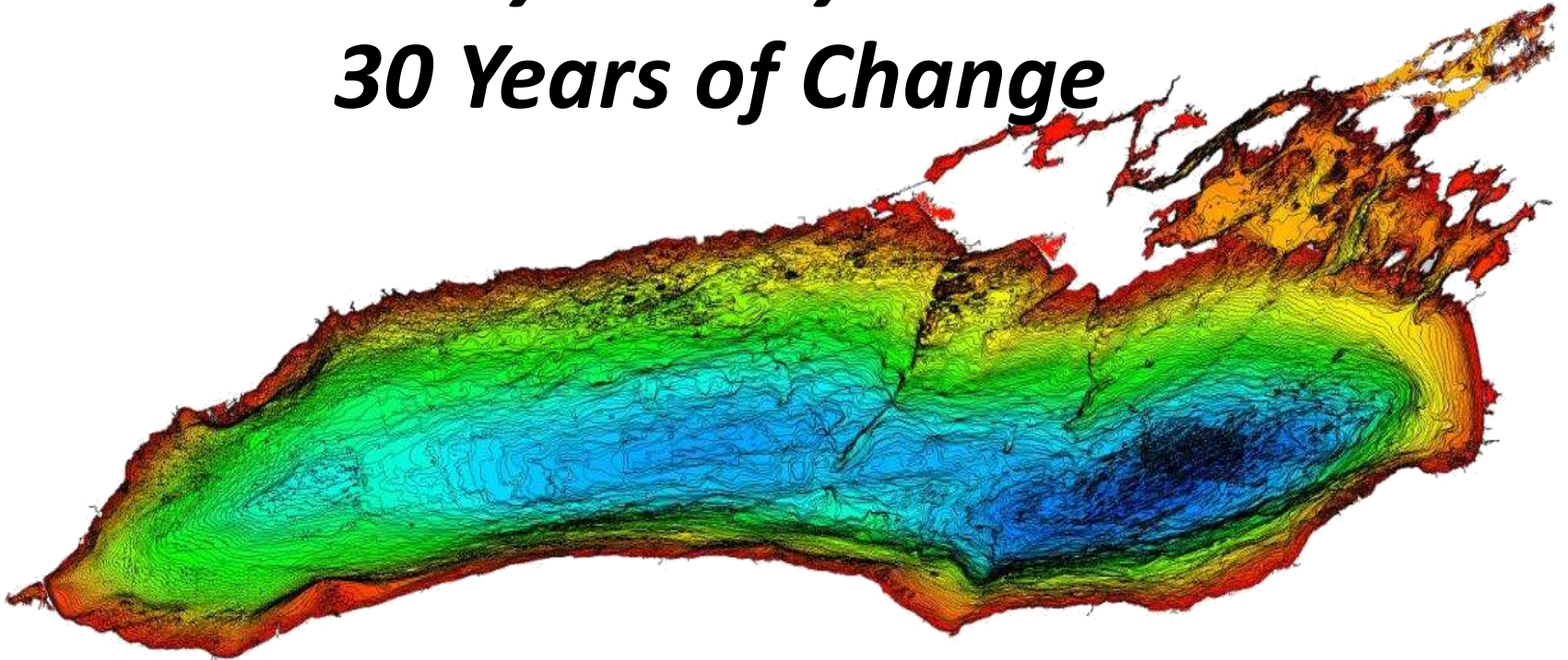
Halton Region Salmon &
Trout Association

Randy Scott's Angler Record

1986-2015 - 30 Years

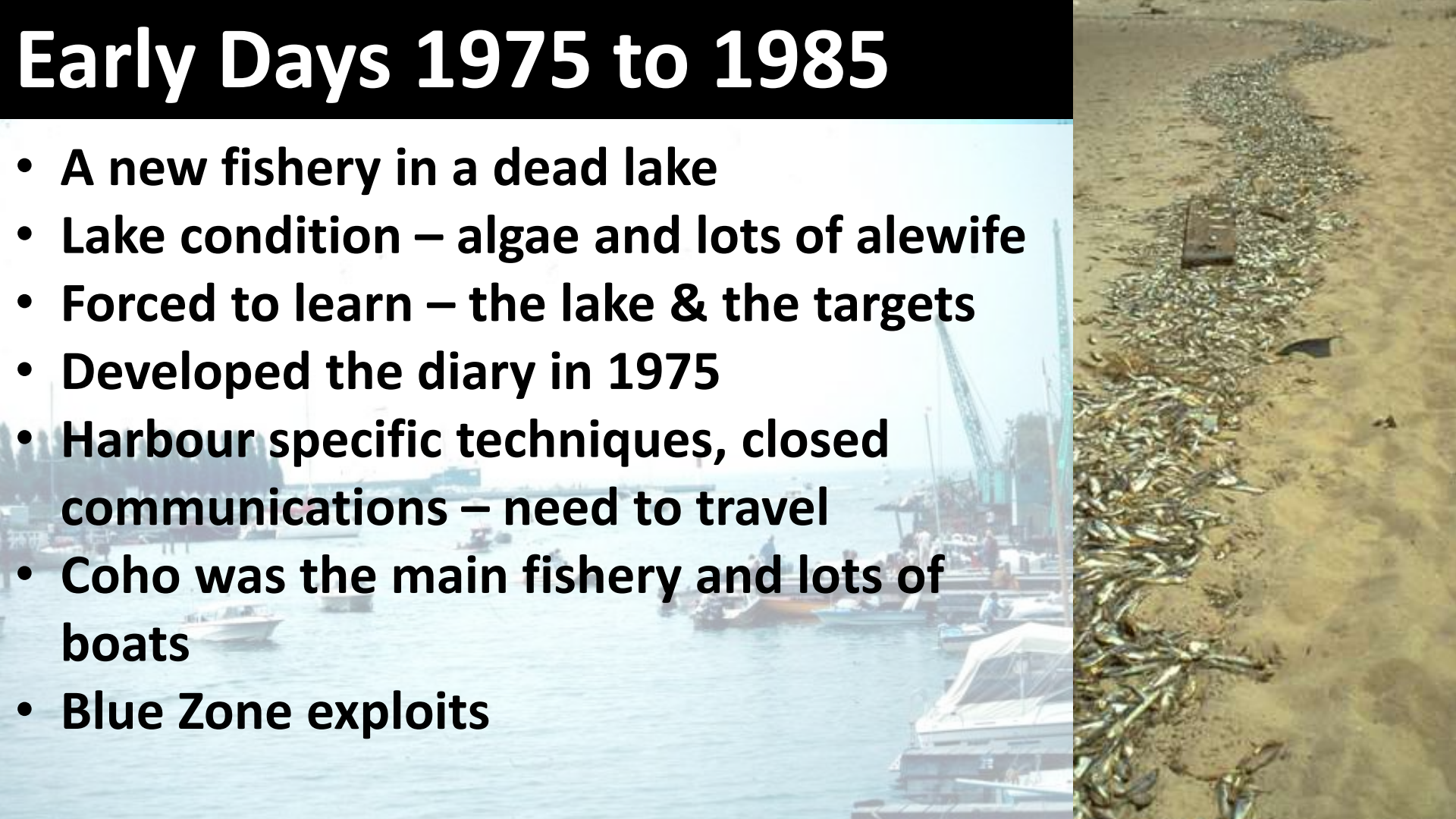


***Lake Ontario's
Salmon and Trout Fishery
Randy's Diary Shows
30 Years of Change***



Early Days 1975 to 1985

- A new fishery in a dead lake
- Lake condition – algae and lots of alewife
- Forced to learn – the lake & the targets
- Developed the diary in 1975
- Harbour specific techniques, closed communications – need to travel
- Coho was the main fishery and lots of boats
- Blue Zone exploits



New York State Browns 1978 to 1985

- **Focused on browns with light tackle – float rods with 6lbs test**
- **Fine tuned techniques – speed lead length boat control**
- **Mostly flutter spoons - very slow precise speeds**
- **Detail on terminal tackle**
- **Pay attention to structure & Niagara current**

Lessons from BC - 1984 & 1988

- Learned cut bait – flashers & mooching
- Extreme depths 290 + currents and structure
- Tides and moon phases affect bite
- Slow speed – drifting – less than 1mile / hour
- Learned rigger mooching techniques
- BC techniques can be applied here as they are the same fish



From 1986 to 1994

- **Stocking priorities changed from Coho to Kings**
- **Locations and technique changed**
- **Water clarity increased - 3' in 70s to 20' early 90's**
- **Introduction of Divers (86) and SlideDivers (93)**
- **Introduction of lead core 1994**
- **Alewife populations noticeably decreasing**
- **Stocking reductions**

Next 10 years 1995 to 2005

- **Zebra mussels having a profound impact**
- **Alewife populations continue to decline**
- **Water clarity now 25'+**
- **Kings becoming more light sensitive**
- **Low light conditions provide best opportunity (time of day, water conditions, wind and wave etc)**
- **More hunting for kings, due to stocking reductions**
- **Travel necessary to follow the migration pattern**

2006 to present

- Spiny water fleas – drastic changes in tackle**
- Water Clarity now 30+’**
- Pelagic forage base continues to decline**
- 2 year old kings now in deep water (very few in 120’ or less)**
- Very few NY Kings the last few years in Western Basin**
- Cold winters cold summers strong winds last 2 years - No water stability**



A topographic map of Lake Ontario and its surrounding regions. The lake is depicted in shades of blue, with green land areas showing elevation contours. Numerous locations are marked with stars: red stars for major cities and blue stars for smaller fishing spots. The stars are arranged along the shoreline, following the curve of the lake. The title 'Angler Diaries' is centered over the lake in a large, bold, black serif font.

Angler Diaries

Darlington
Oshawa
Whitby
Bluffers
Toronto
Port Credit
Bronte
Hamilton
Dalhousie
Niagara
18 Mile Cr.
Oak Orchard
Sandy Creek
Genesee
Rochester
Wellington
Ganaraska R.
Salmon R.
Oswego
Little Sodus
Sodus

A Page From Randy's Log Book



12/14

Date 10-06-26				Hrs. Fished Start 6 Finish 1:30				Total Hrs 7.5		Rigger Hrs. 30		Slide Diver Dipsey 15		Port P.D.				
Weather PCloudy				Wind Direction Calm				Velocity		Inline 7		Tail Gunner 7		Guests				
Wave Direction Calm				Wave Height				Surface Temp 58.8		Other		Cloud Type		Barometer Rising Falling				
Lure Speed	Time Landed	Species	Weight	Lgth Clip	Lure Depth	Rigger Temp	Water Depth	Gps Co-ords Latitude	Gps Co-ords Longitude	Lead Length	Lure	Colour	Tape	Cat #	Set-up			
705	24 630	K	18	25in	50		165	16 166	59 348	150	PL 205 GAT			DD3	SW			
	22 646	K	9	5in	53	42	129	168	345	30	FLC 261			R	SW			
	22 719	Bor	10	AP	65	42	119	170	337	50	FLH 4272	EGG		R	SW			
840	1-9 823	K	12	AP	60	42	119	138	318	150	STECK 188			DD3	SW			
	25 910	B	8		35		99	175	57 304	100	W 001	Lemon		IN	SC			
	25 925	Colts	8		66	42	131	176	320	300	SD 70036			T119	300T6 CY			
	22 1105	B	5		38	48	137	171	59 309	20	W 441	Skidje	FLH	R	NE			
	22 1110	B	4		50	43	128	171	312	20	W 441	223		R	NE			
	2 1159	K	20		60	43	168	171	59 327	180	SD 70036	EGG	T119	DD3	W			
	25 1229	K	32		60	43	121	172	329	180	SD 70036		T119	DD3	W			
	3 1227	B	6		27	57	140	172	327	6	NP	K 22		DR	S			
	24 1234	B	6		38	57	140	172	59 328	22	STECK	99		R	W			
Hits															Temperature		Depth	
Stb Inl	Diver1	DR	Probe	Rigger 3	Rigger 4	Diver2	Port Inl	Surface	60'									
			1		1			10'	70'									
								20'	80'									
								30'	90'									
								40'	100'									
								50'	110'									

Trolled West of Osnap mixed Bag Right before Heavy Rain
 Threw multitude of spoon nothing consistent trolled bottom East 3.5 and well

Date	10-06-26	Hrs. Fished	Start 6	Finish 1:30	Total Hrs	7.5	Rigger Hrs.	30	Slide Diver	Dipse	75	Port	P.P.		
Weather	P Cloudy	Wind Direction	Calon	Velocity			Inline		Tail Gunner		Guests				
							Lead Core	7							
							CU		7						
Wave Direction	Calon	Wave Height		Surface Temp	58.8		Other								
							Cloud Type		Barometer	Rising	Falling				
Lure Speed	Time Landed	Species	Weight	Lgth Clip	Lure Depth	Rigger Temp	Water Depth	Gps Co-ords Latitude	Gps Co-ords Longitude	Lead Length	Lure	Colour	Tape	Cat #	Set-up

25	9:25	Colts	8		66	42	131	16 176	320	300	SD 70036			T119	300T
22	11:05	B	5		38	48	131	171	59 309	20	W 49. Sldge			FT19	R
22	11:10	B	4		50	43	108	171	310	20	W 46 213				R
2	11:59	K	20		60	43	108	171	59 327	180	SD 70036	E L64		T119	DD3
2.1	12:09	K	32		60	43	121	172	329	180	SD 70036			T119	DD3
3	12:27	B	6		27	59	140	177	321	6	NP	K 22			DR

Lure Speed	Time Landed	Species	Weight	Lgth Clip	Lure Depth	Rigger Temp	Water Depth	Gps Co-ords Latitude	Gps Co-ords Longitude	Lead Length	Lure	Colour	Tape	Cat #	Set-up
2.5	9:25	Salts	8		66	42	134	16 176	320	320	SD 70036			T119	300T4
2.2	11:05	B	5		38	48	137	171	59 309	20	W 49. Sledge			FT19	R
2.2	11:10	B	4		50	43	108	171	310	20	W 46 213				R
2.7	11:51	K	20		60	43	108	171	329	180	SD 70036			T119	DD3
2.7	12:09	K	32		60	43	121	172	329	180	SD 70036			T119	DD3
2.7	12:11	B	6		27	41	140	171	321	6	NP	K 22			DR

- June 26, 2010, Oshawa, partly cloudy/calm, surf. temp 58 F.
- 32 pound King landed at 12:09 pm –lure speed 2.7 mph.
- DispsyDiver setting # 3 180 feet back with a Spindoctor (Green Dot Crush Glow) and A-TOM-MIK Fly (Glow Hammer)
- Fish was hooked at 43 F, down 60 ft over 121 feet of water.

Randy's Stats for from 1986 – 2015

	1986-89	1990-99	2000-09	2010-15
Trips	320	584	518	347
Total Fish	2,338	4,134	3,389	2,661
Chinook	809	1,082	1,606	619
Steelhd	910	2,325	1,331	1,523
Other Fish	619	727	452	519
Fish per trip	7.31	7.08	6.54	7.67
Kings/Trip	2.53	1.85	3.10	1.78
Steelhd/Trip	2.84	3.98	2.57	4.39

Key Findings from 30,000 feet

- **Randy has changed his approach over the years**
- **Randy is a hunter and moves around the lake**
- **In the mid 1980's the focus was on Kings and now it is on Steelhead.**
- **The diary does not show strategy or what did not work.**
- **Randy and Bill are a little obsessive about their data, records, lures, etc.....**

A topographic map of the Lake Ontario region, showing land in shades of green and blue for water. Various locations are marked with stars: red stars for Toronto, Port Credit, Bronte, Oshawa, and Wellington; blue stars for Bluffers, Whitby, and Oswego; and purple stars for Rochester and Salmon R. A semi-transparent blue box is centered over the map, containing text about Randy Scott's fishing trips.

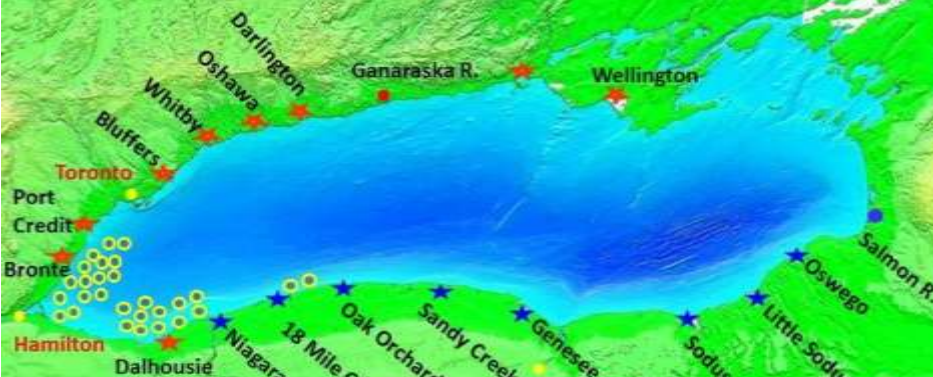
Randy Scott – 1986 to 2015

1769 Fishing Trips

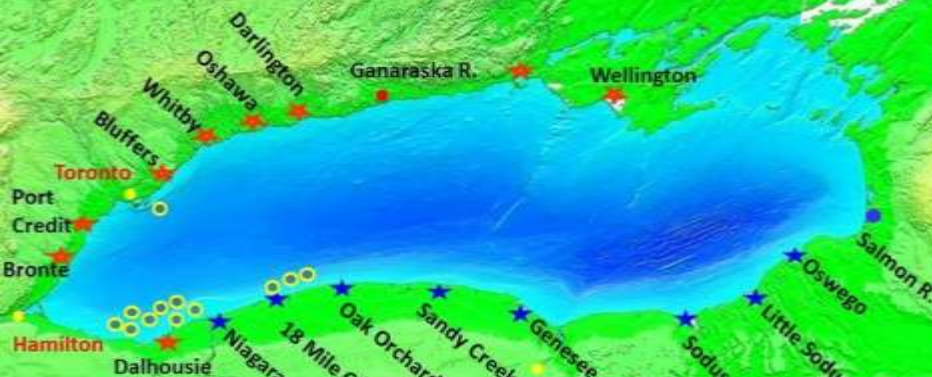
Over 12000 fish recorded

Locations shown on maps are general. Each trip was placed into one of 7 zones: In-shore South NY, In-shore Pt. Dalhousie, In-shore Burlington to Mississauga, In-shore Toronto Islands, In-shore Whitby to Bowmanville, In-shore Wellington, Off-shore deep Toronto/BlueZone.

1986-1989 April

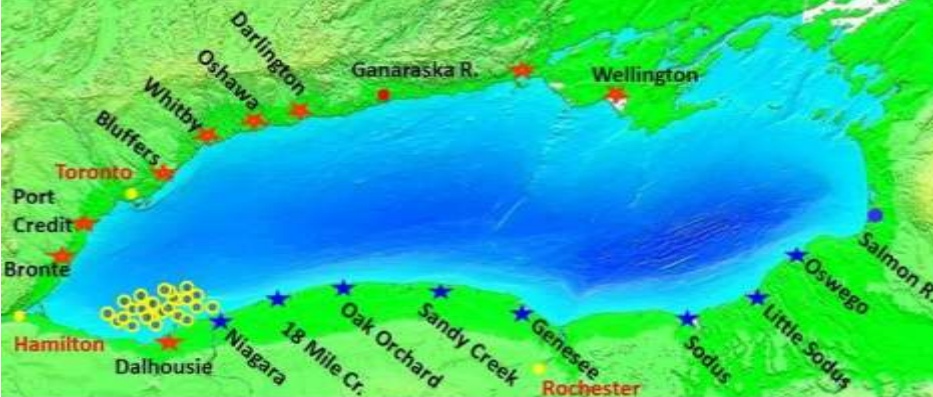


1990s April

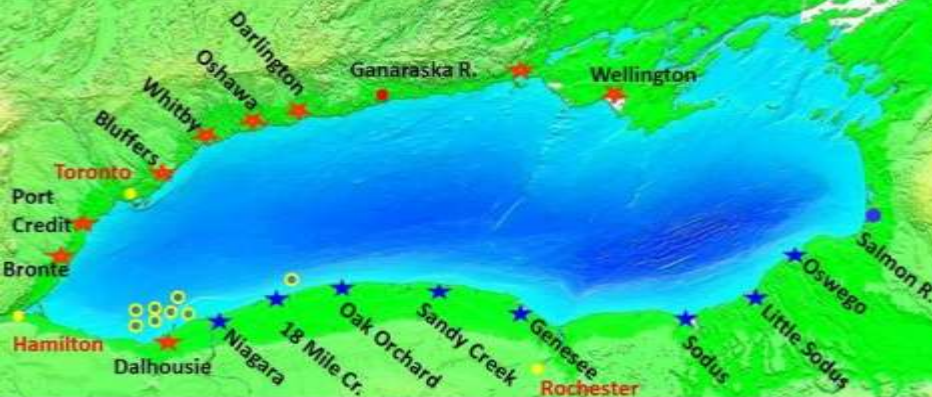


Locations shown on maps are general. Each trip was placed into one of 7 zones: In-shore South NY, In-shore Pt. Dalhousie, In-shore Burlington to Mississauga, In-shore Toronto Islands, In-shore Whitby to Bowmanville, In-shore Wellington, Off-shore deep Toronto/BlueZone.

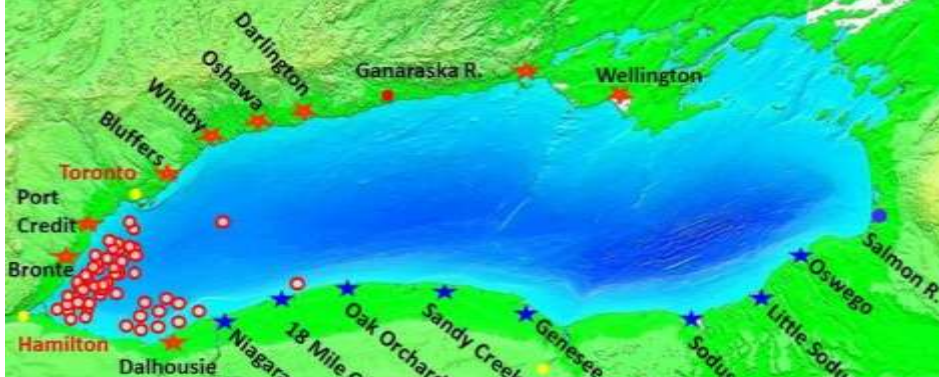
2000s April



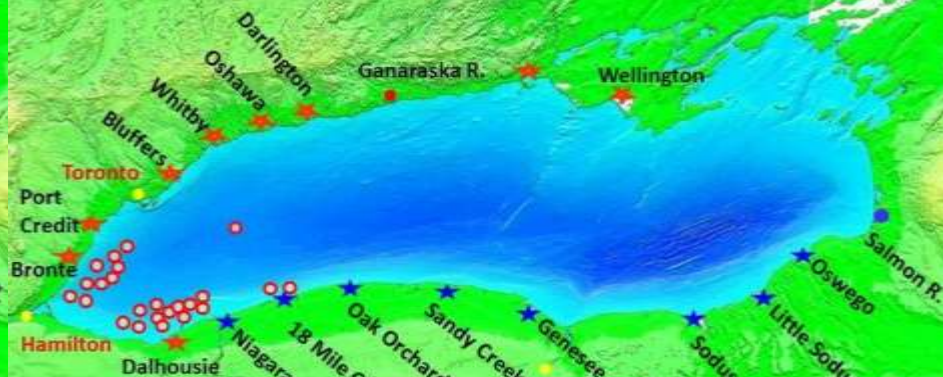
2010 – 2015 April



1986-1989 May

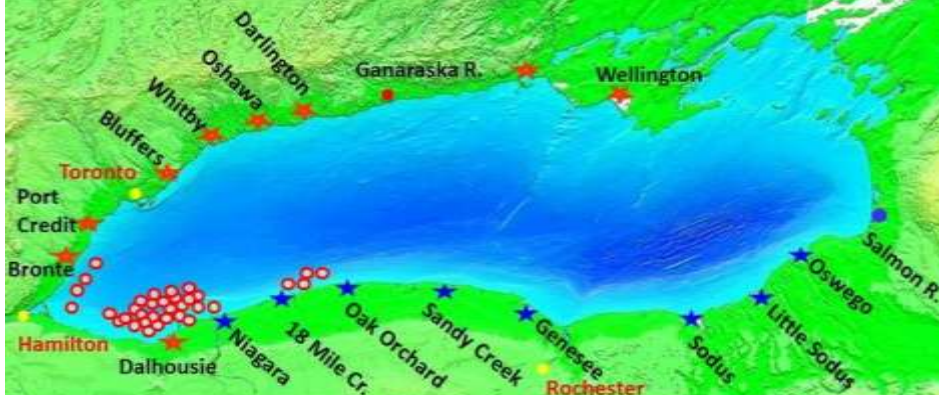


1990s May

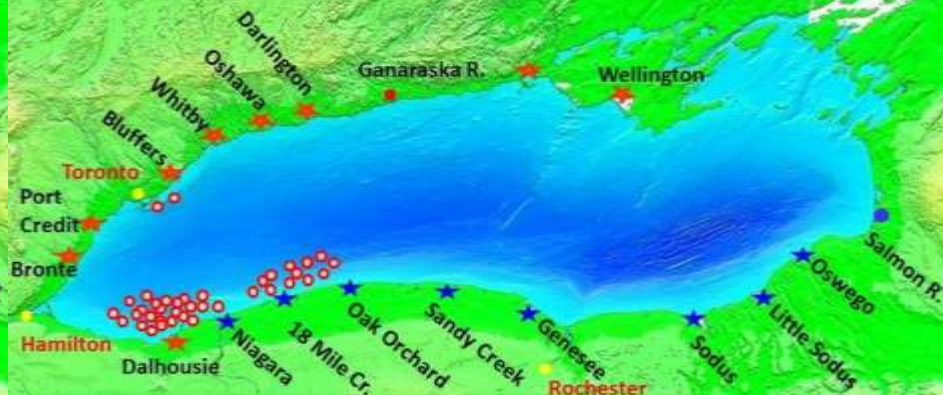


Locations shown on maps are general. Each trip was placed into one of 7 zones: In-shore South NY, In-shore Pt. Dalhousie, In-shore Burlington to Mississauga, In-shore Toronto Islands, In-shore Whitby to Bowmanville, In-shore Wellington, Off-shore deep Toronto/BlueZone.

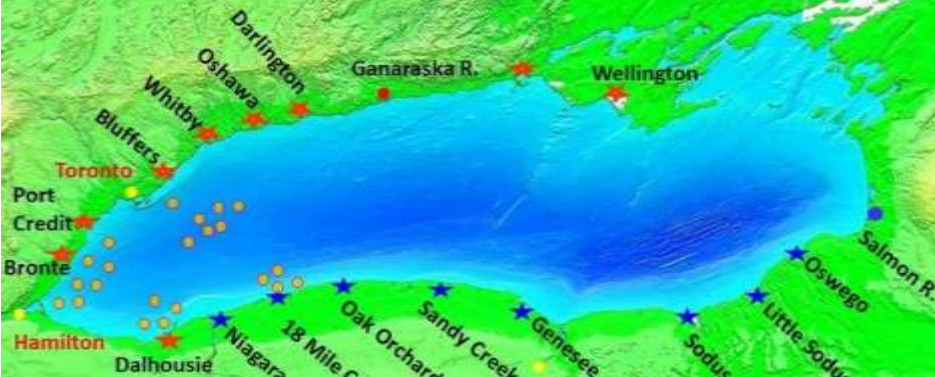
2000s May



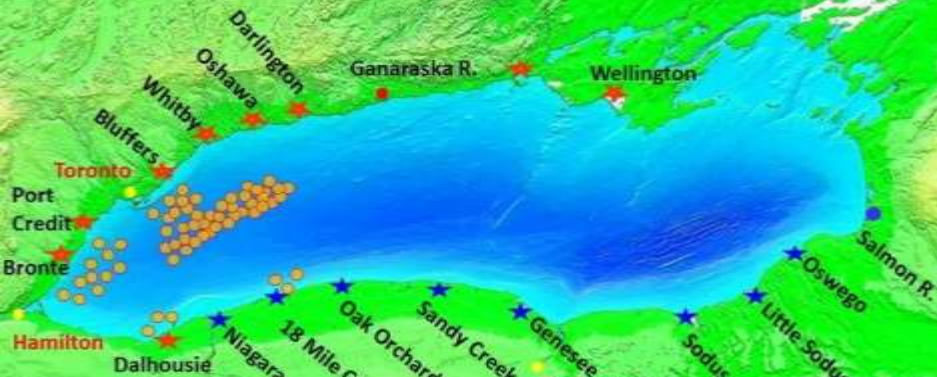
2010 – 2015 May



1986-1989 June

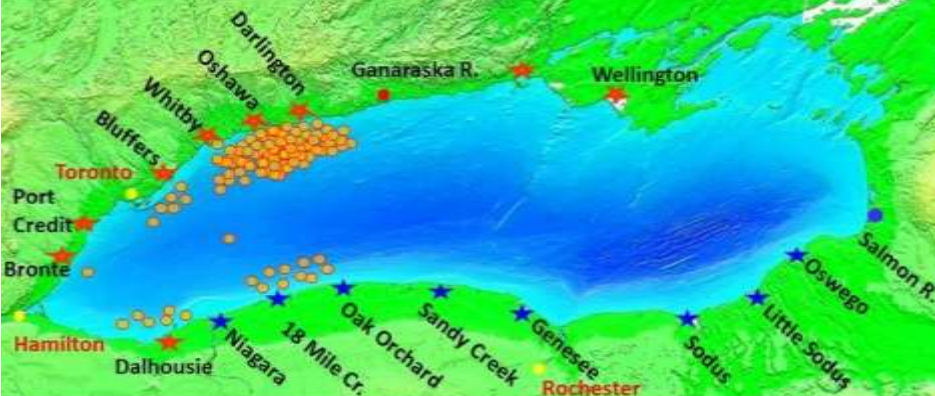


1990s June

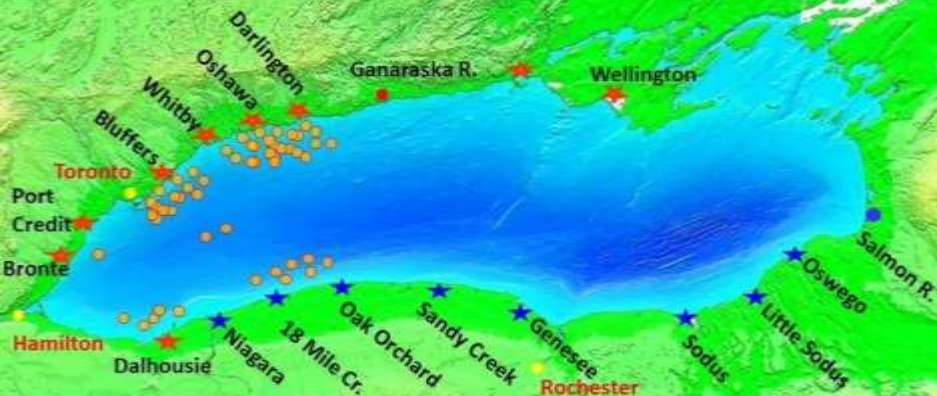


Locations shown on maps are general. Each trip was placed into one of 7 zones: In-shore South NY, In-shore Pt. Dalhousie, In-shore Burlington to Mississauga, In-shore Toronto Islands, In-shore Whitby to Bowmanville, In-shore Wellington, Off-shore deep Toronto/BlueZone.

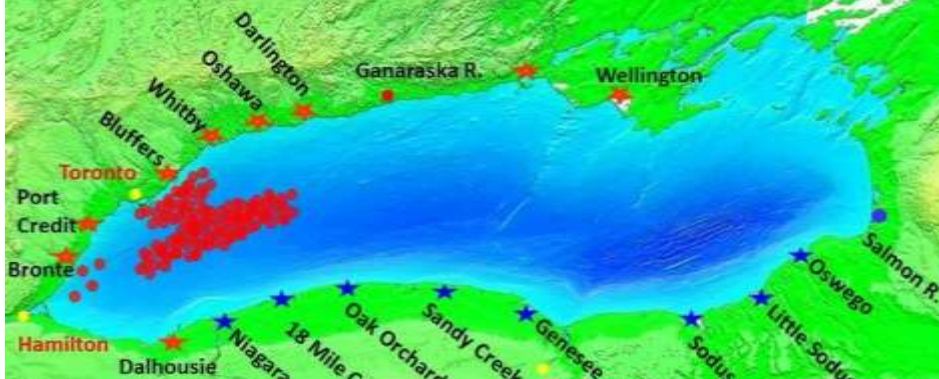
2000s June



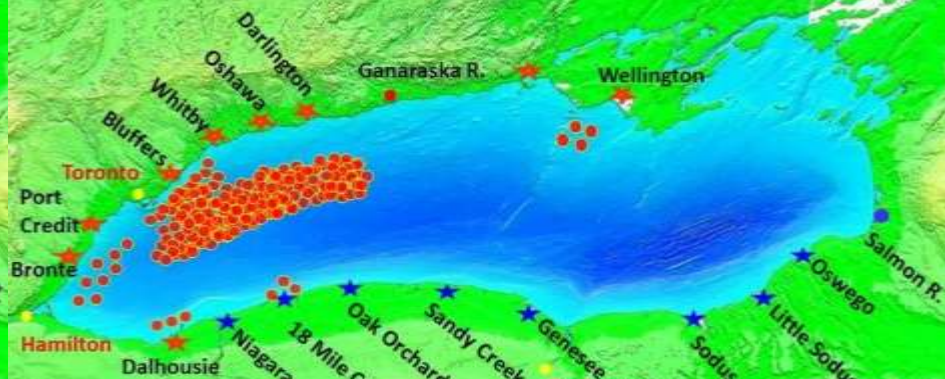
2010 – 2015 June



1986-1989 July

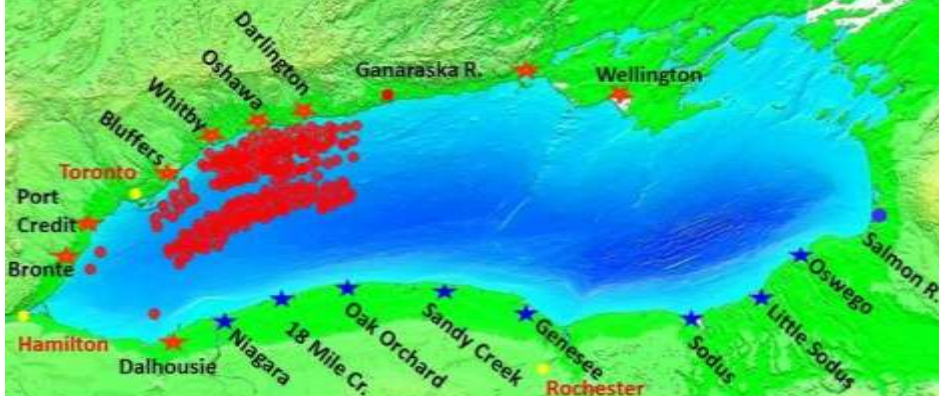


1990s July

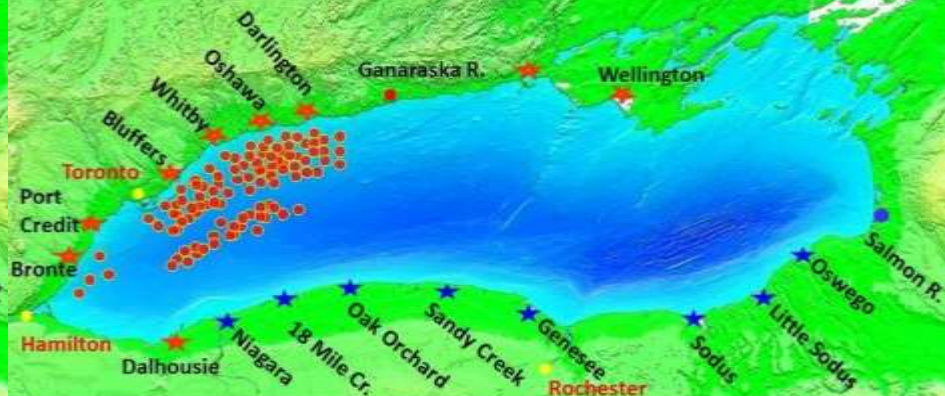


Locations shown on maps are general. Each trip was placed into one of 7 zones: In-shore South NY, In-shore Pt. Dalhousie, In-shore Burlington to Mississauga, In-shore Toronto Islands, In-shore Whitby to Bowmanville, In-shore Wellington, Off-shore deep Toronto/BlueZone.

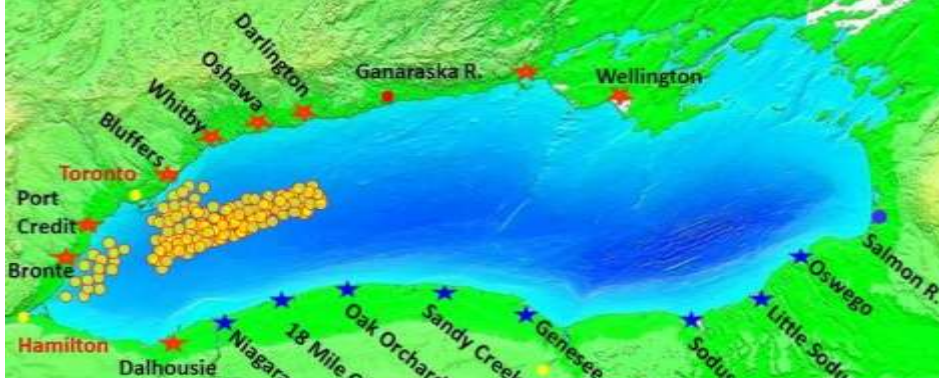
2000s July



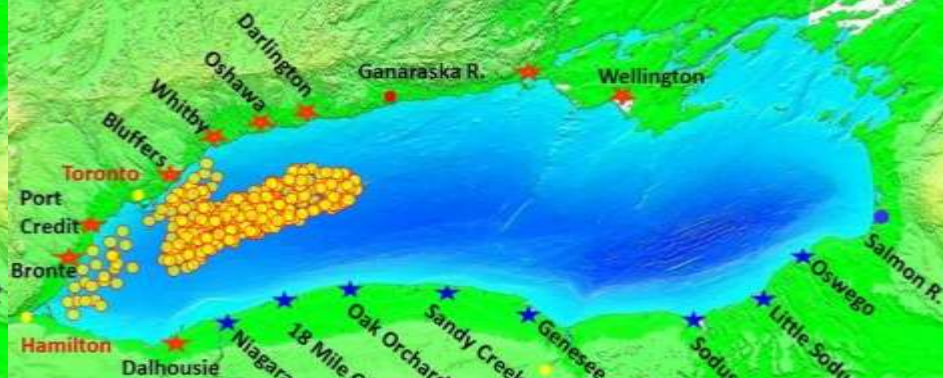
2010 – 2015 July



1986-1989 August

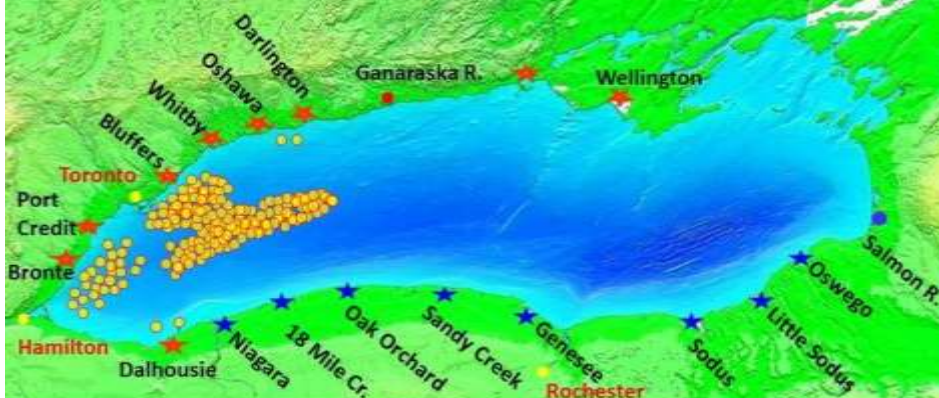


1990s August

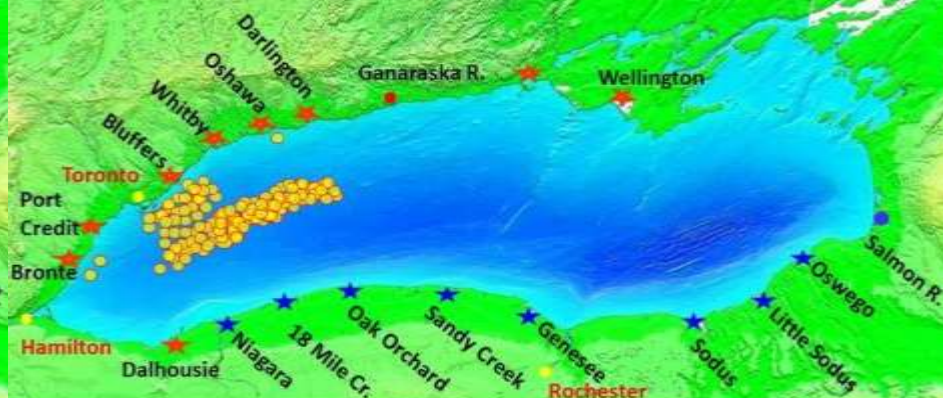


Locations shown on maps are general. Each trip was placed into one of 7 zones: In-shore South NY, In-shore Pt. Dalhousie, In-shore Burlington to Mississauga, In-shore Toronto Islands, In-shore Whitby to Bowmanville, In-shore Wellington, Off-shore deep Toronto/BlueZone.

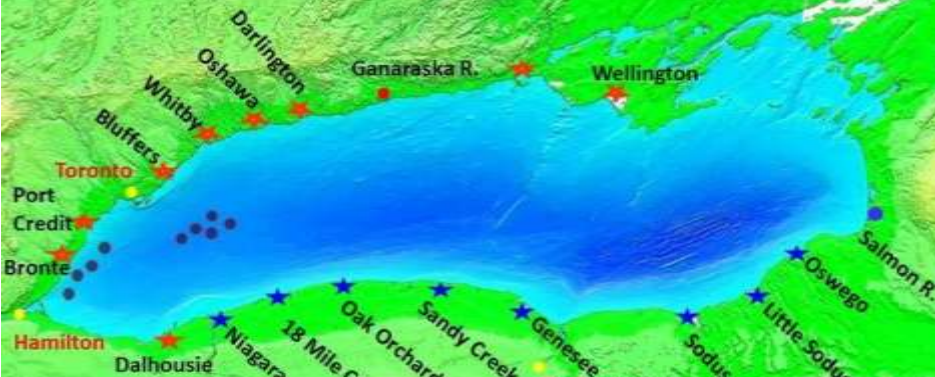
2000s August



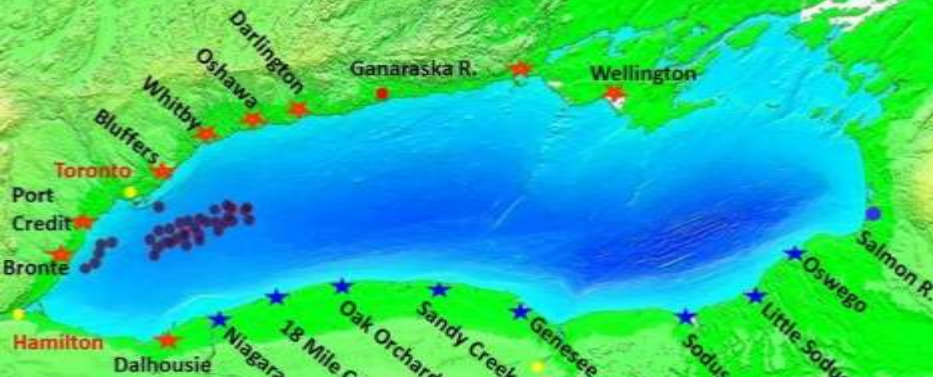
2010 - 2015 August



1986-1989 September

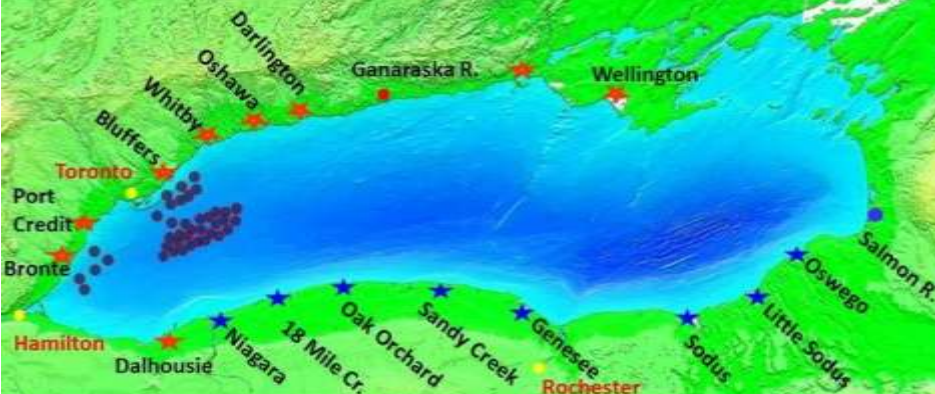


1990s September

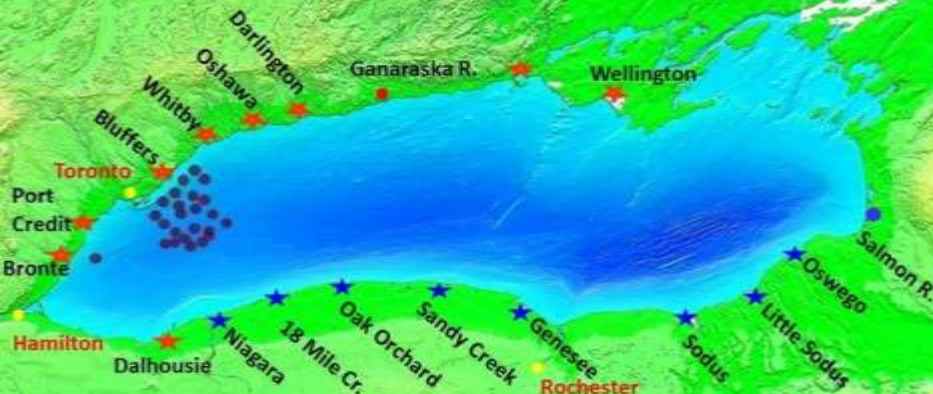


Locations shown on maps are general. Each trip was placed into one of 7 zones: In-shore South NY, In-shore Pt. Dalhousie, In-shore Burlington to Mississauga, In-shore Toronto Islands, In-shore Whitby to Bowmanville, In-shore Wellington, Off-shore deep Toronto/BlueZone.

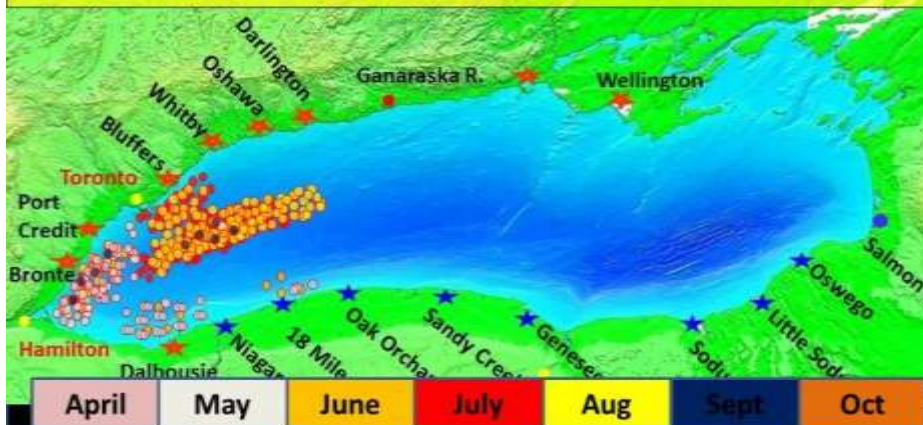
2000s September



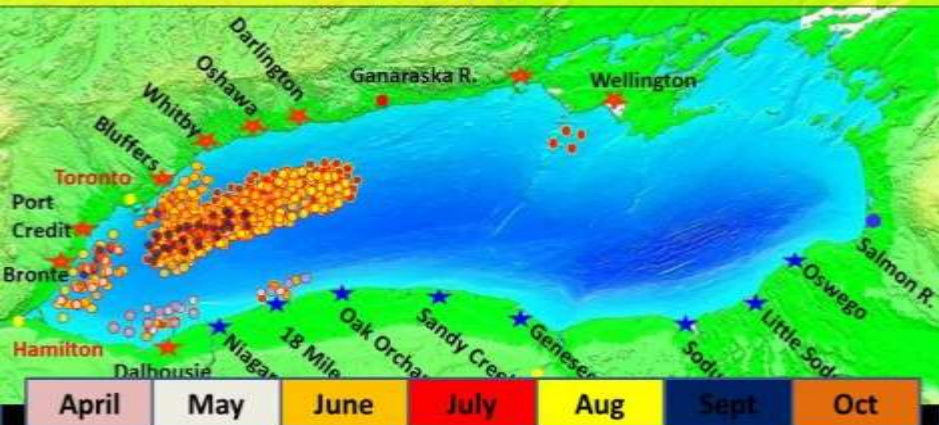
2010 – 2015 September



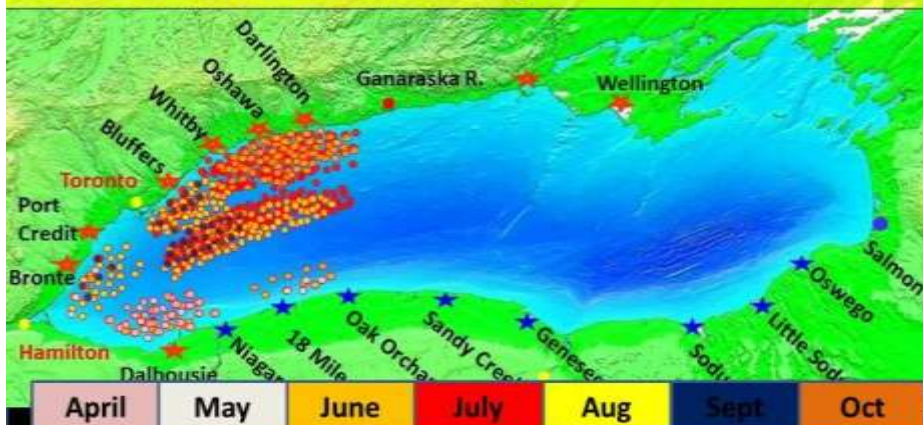
1986-1989 All 320 Trips – 2338 Fish



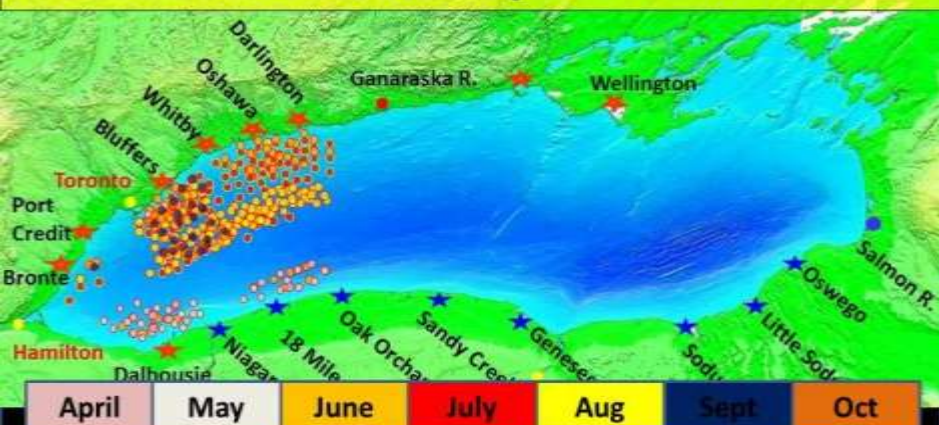
1990-1999 All 584 Trips 4134 Fish



2000-2009 All 518 Trips 3389 Fish

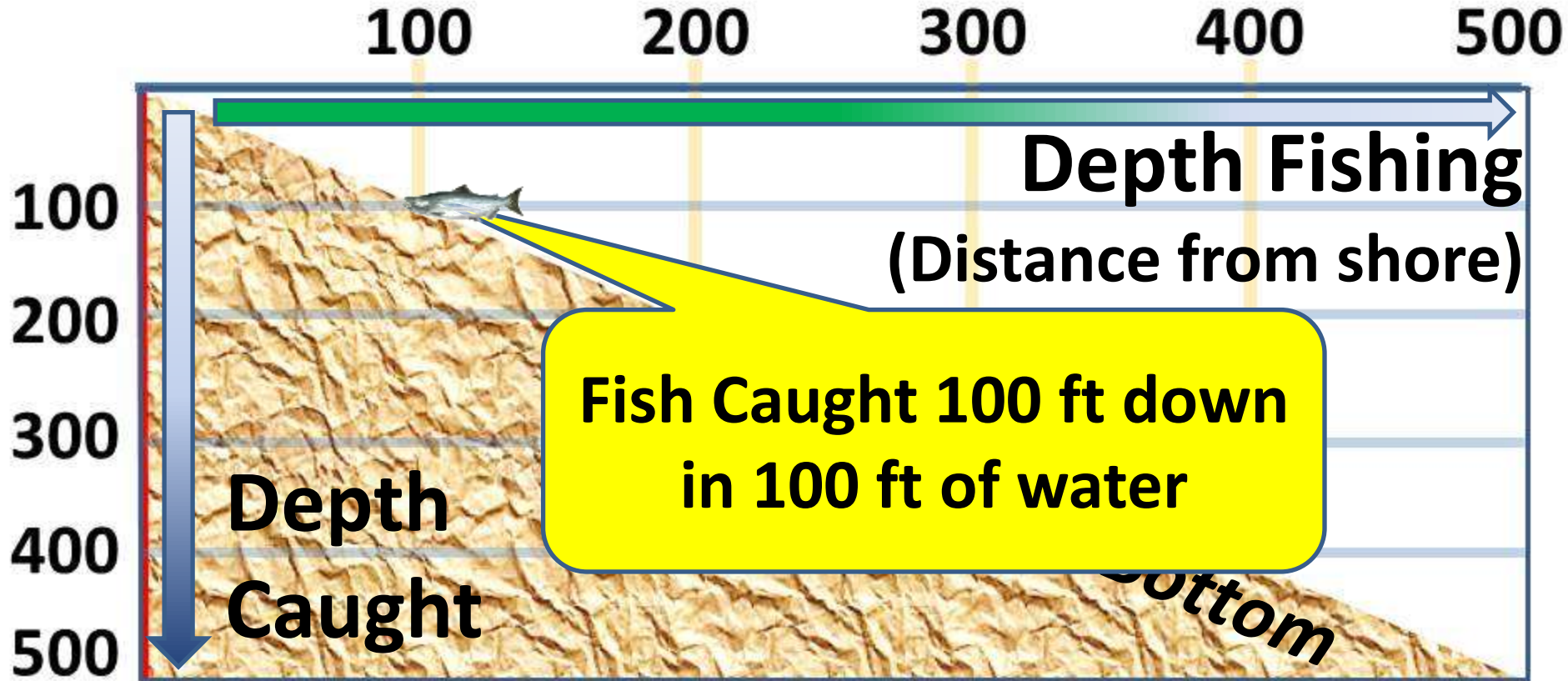


2010-2015 All 347 Trips 2661 Fish

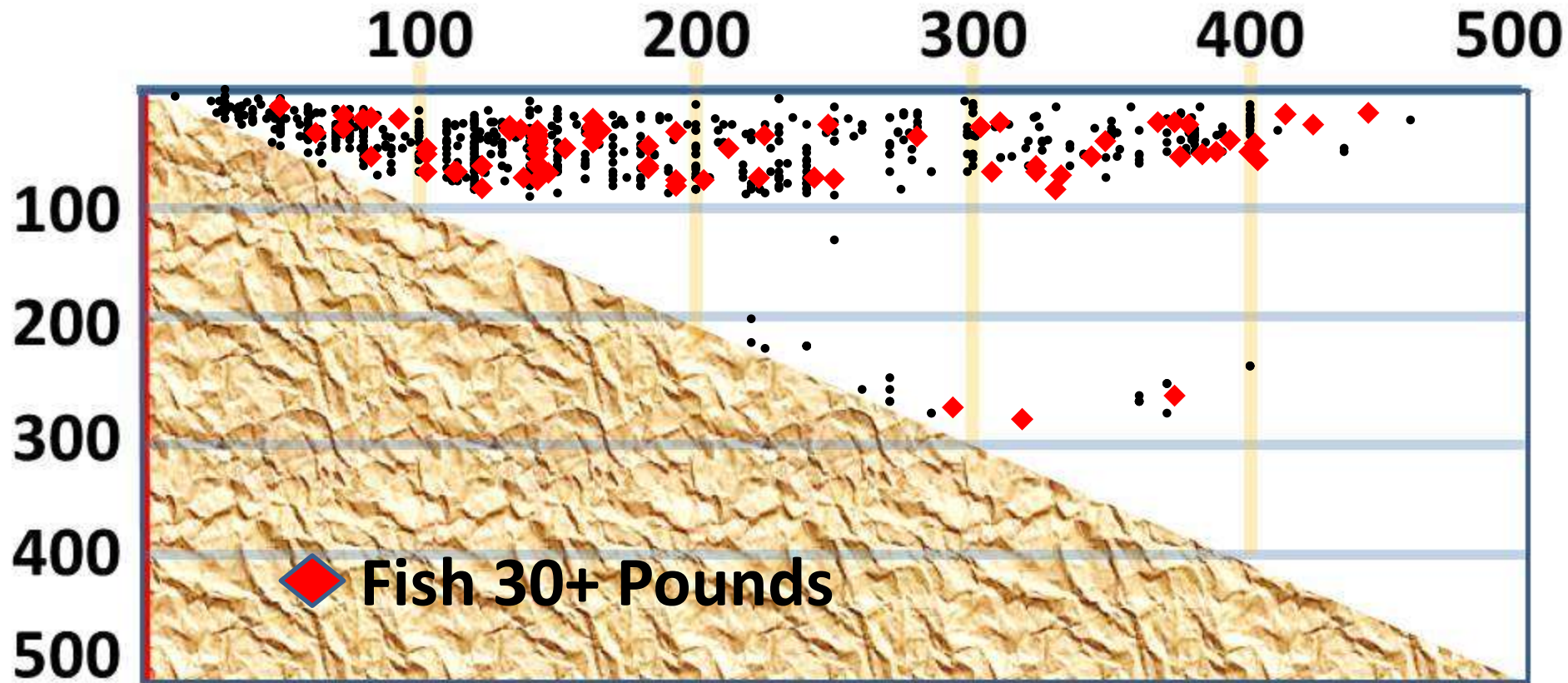


Randy Scott's 30 Year Catch Record

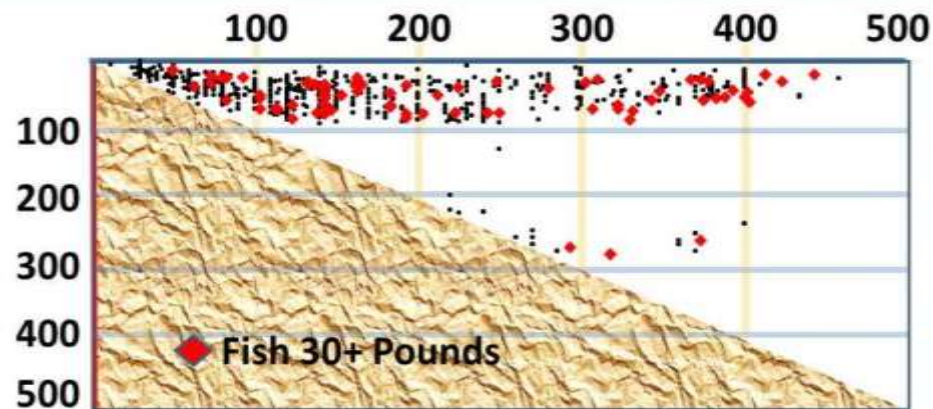
Chinook Salmon and Steelhead



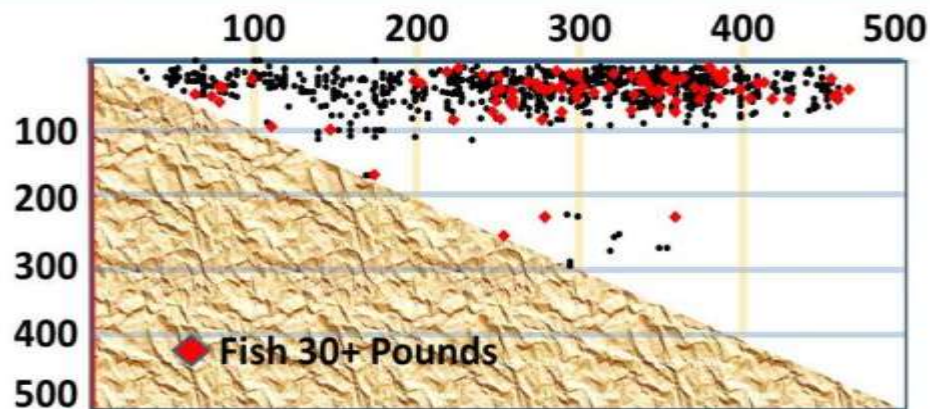
Randy Scott 809 Chinook Salmon 1986-89



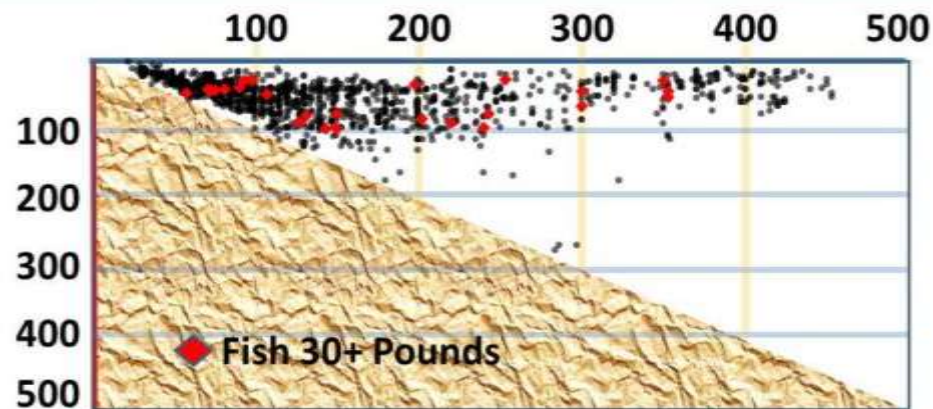
Randy Scott 809 Chinook Salmon 1986-89



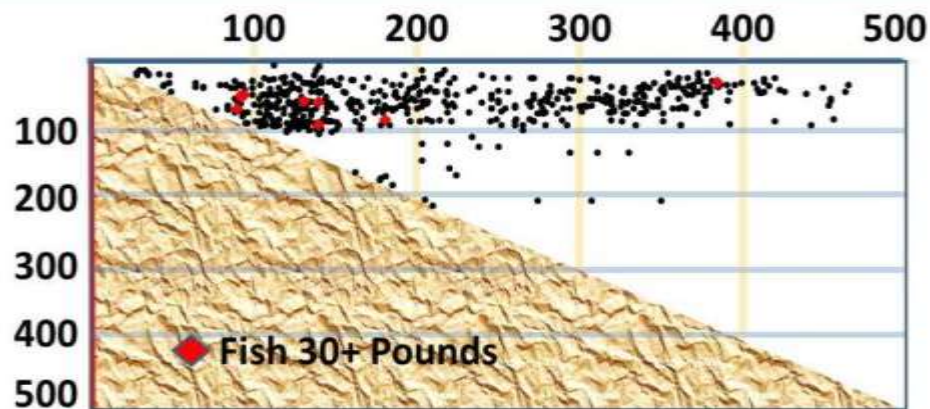
Randy Scott 1082 Chinook Salmon 1990s



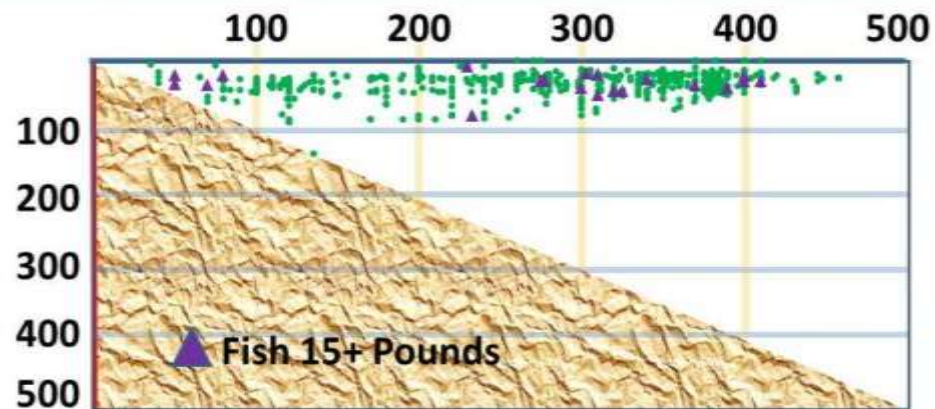
Randy Scott 1607 Chinook Salmon 2000s



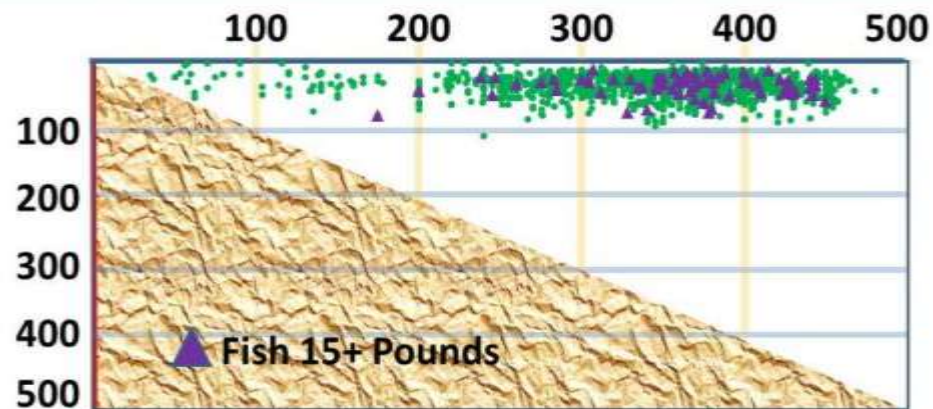
Randy Scott 619 Chinook Salmon 2010-15



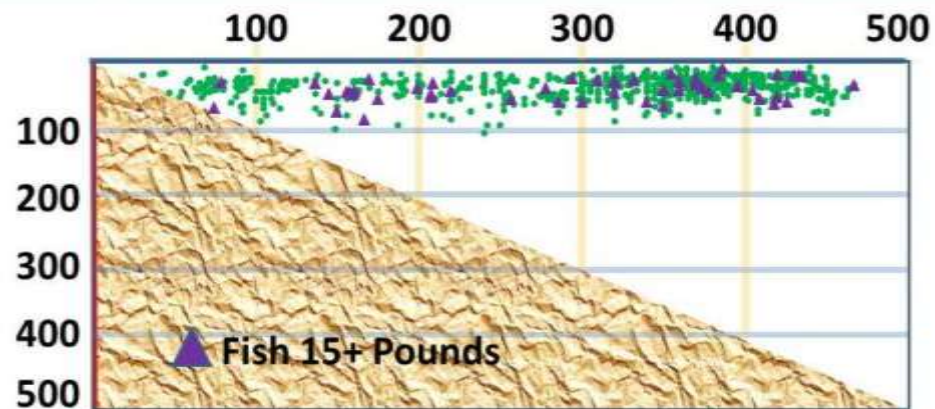
Randy Scott 910 Steelhead 1986 - 89



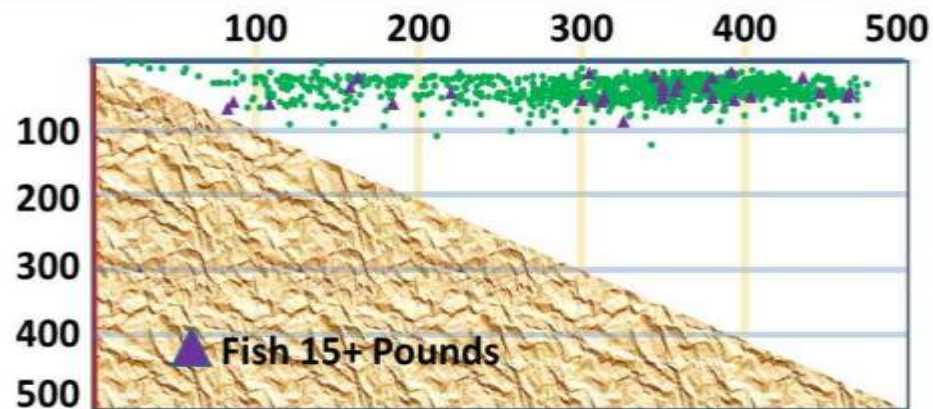
Randy Scott 2325 Steelhead 1990s



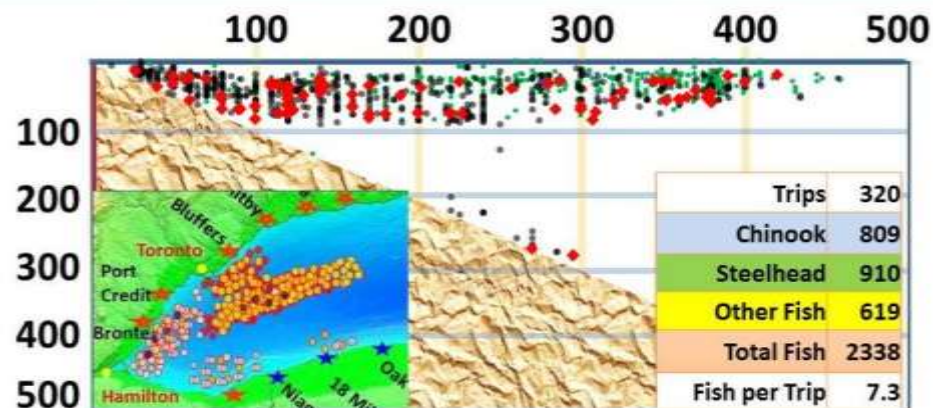
Randy Scott 1331 Steelhead 2000s



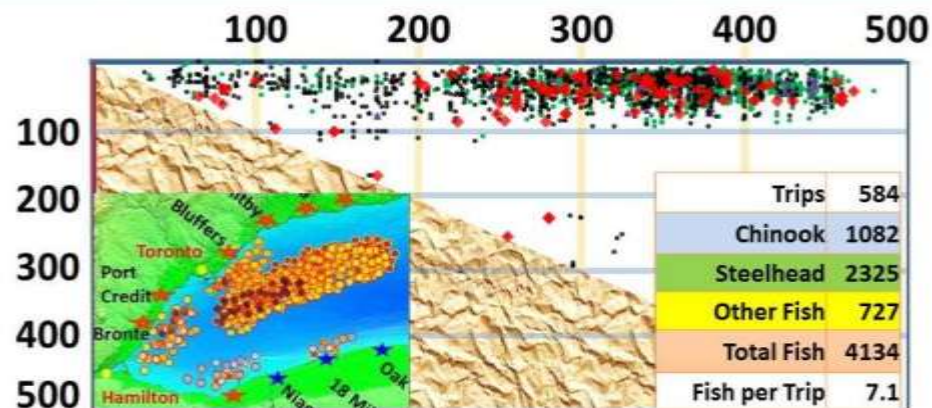
Randy Scott 1523 Steelhead 2010-2015



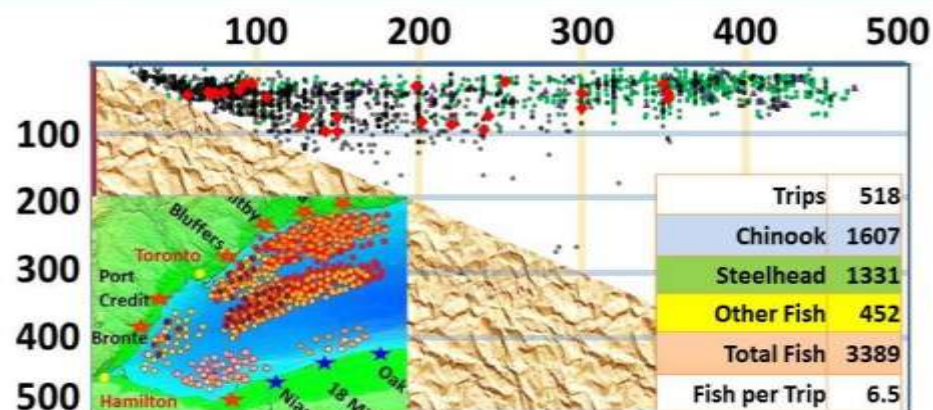
All Chinook Salmon and Steelhead 1980s



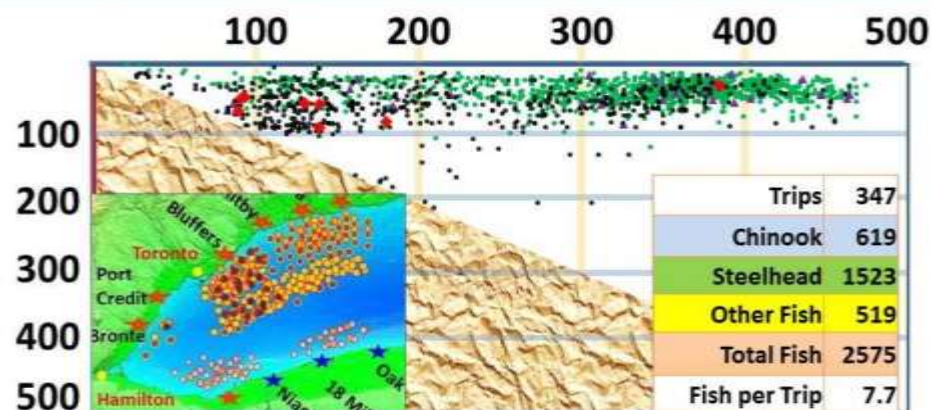
All Chinook Salmon and Steelhead 1990s



All Chinook Salmon and Steelhead 2000s



All Chinook Salmon and Steelhead 2010-2015



The Best Weeks & Days

Deepest Kings &

Best Lures



K16



Pumpkinseed Glow

K18



Greenberry Glow

K19



Blueberry Glow

K78



Black Raspberry

K21



Bubble Gum



K44



Lipstick

Best Week - All Fish:

ERA	Year	Week	Fish Caught
1980s	1989	1 st week of August	137
1990s	1993	1 st week of August	168
2000s	2009	3 rd week of August	87
2010s	2011	2 st week of August	110

Best Day - All Fish:

ERA	Date	Fish Caught
1980s	Sept. 17 th , 1988	31
1990s	Aug. 8 th , 1993	51
2000s	Aug. 11 th , 2007	43
2010s	Aug. 6 th , 2011	51






Deepest Kings:

ERA	Date	Weight	Depth Lure/Water
1980s	Aug. 8 th , 1989	33.75	280/295
1990s	Jun. 19 th , 1991	23	300/380
2000s	Jun. 3 rd , 2009	10	273/284
2010s	July , 2014	28.35	330/330

Randy's Top 10 Ten Steelhead Lures (spoons)

	Lure	Primary Colour	Secondary Colour
1	North Port - Kaleidoscope	Gold	Orange/red or Chartreuse
2	Eppinger	Silver	Chartreuse / Kelly Green
3	Warrior	Silver	Orange / Red
4	Mini Predator	Kelly Green or Gold	sunshine tape or glow tape
5	Fishlander	Gold or Glow	Watermelon or Easter Egg
7	Northern King	Black & white cup	Glow Ladderback
8	Nasty Boy	Gold	Chartreuse
9	Evil Eye	Black	Silver Lightning Bolt
10	Silver Streak	Silver	Chartreuse/ Pink

Randy's Top 10 Ten Steelhead Lures (spoons)

	Lure	Primary Colour	Secondary Colour			
1	North Port - Kaleidoscope	Gold	Orange/red or Chartreuse			
2	Eppinger	Silver	Chartreuse / Kelly Green			
3	Warrior	Silver	Orange / Red			
4	Mini Predator	Kelly Green or Gold	sunshine tape or glow tape			
5	Fishlander	Gold or Glow	Watermelon or Easter Egg			
7	<div><div>K16</div><div>Pumpkinseed Glow</div></div>	<div><div>K18</div><div>Greenberry Glow</div></div>	<div><div>K19</div><div>Blueberry Glow</div></div>	<div><div>K78</div><div>Black Raspberry</div></div>	<div><div>K21</div><div>Bubble Gum</div></div>	<div><div>K44</div><div>Lipstick</div></div>
8						
9						
10						

Randy's Current Top King Lures

	Lure	1 – Colour	2 – Colours
1	SpinDoctor & A-TOM-MIK Fly	SpinDoctor – <ul style="list-style-type: none"> • Caramel Dolphin • Black/Green • White/Green or Black Dalmatian 	Fly – T119 Glow Hammer <ul style="list-style-type: none"> • T23 Crinkle Green • T106 “B” Fly
2	Spin Doctor & MC Rocket		MC Rocket – #69 Pearl White Glow Dalmatian
3	FishLander Spoon	Ultra-Glow Easter Egg	Chartreuse/Purple/Green Fat Jerry (Ludington water melon)
4	Warrior Spoon	<ul style="list-style-type: none"> • BoneCrusher Glow #231 • #225 Glow EasterEgg 	#001 Lemon Ice Silver with Chartreuse Tape

Randy's Current Top King Lures

	Lure	1 - Colour	2 - Colours
	 <p>70036 Green Dot Crush</p>	 <p>70933 Carmel Dolphin</p> <p>Black Dalmatian</p>	  <p>69 Dalmatian</p>
3	FishLander Spoon		 <p>Green (melon)</p>
4	Warrior Spoon	 <p>#225 Glow</p>	 

Panel Discussion

Randy Scott, Bill Hawkins, Jerry Felluca, Al Van Dusen

